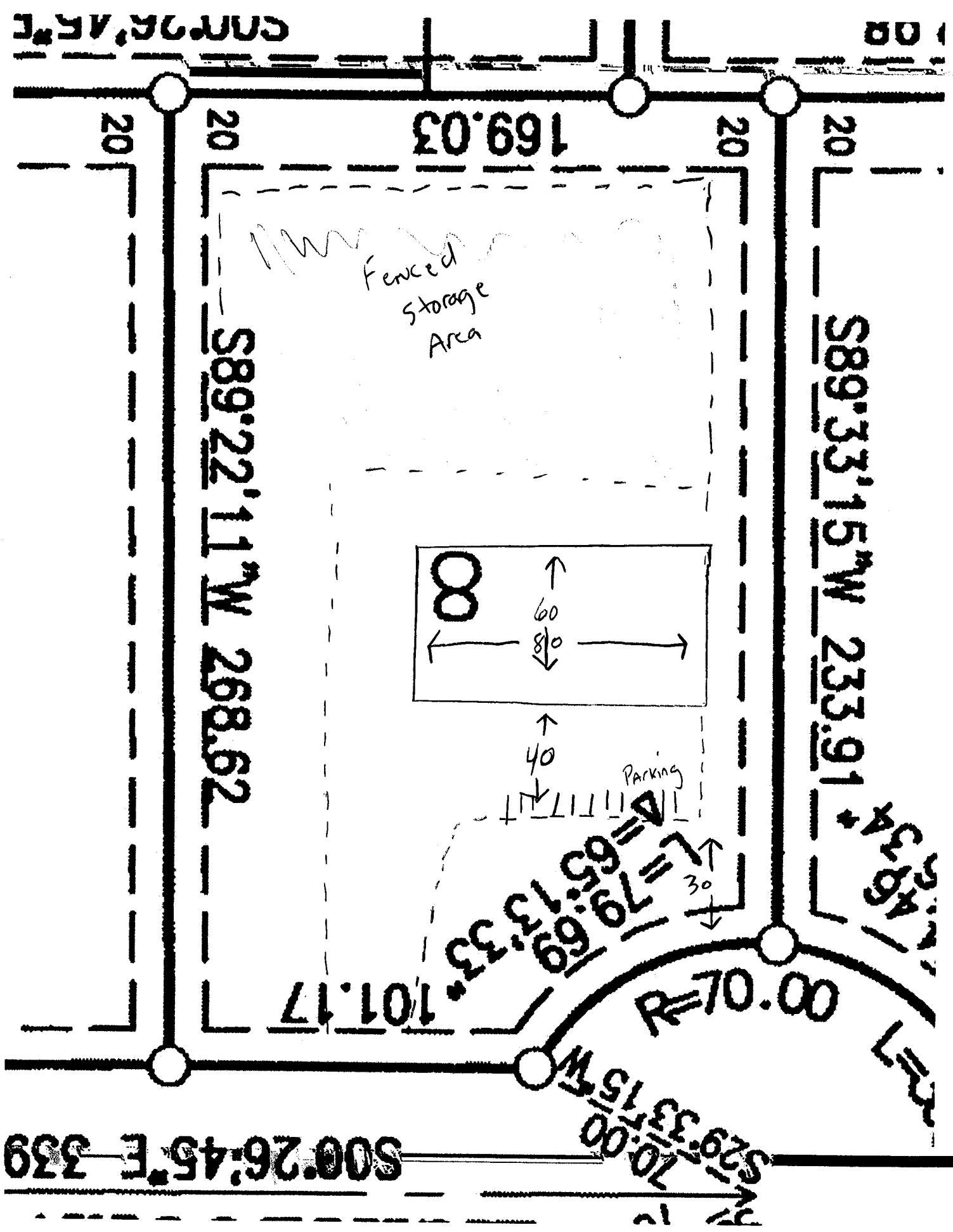


LOCATION MAP

3000 Lightbourn Court





S00.26:45°E 339

S00.26:45°E 339

S00.26:45°E 339

S27.70:00
S29.33:15°W
R=70.00

S4.54:41
S89.33:15°W
233.91

Fenced Storage Area

Parking

8

60

80

40

30

101.17

R=70.00

S65.13:33°

S79.69:69°

S89.33:15°W 233.91

S89.22:11°W 268.62

169.03

20

20

20

20



Building Specs

Width: 60'
 Length: 100'
 Height: 16'
 Roof Type: Gabled
 Roof Rise: 1":12"
 Secondary Members: Steel

Colors

Roof Color: Burnished Slate
 Wall Color: Light Stone
 Trim Color: Brown
 Soffit Color: Gray
 Wainscot Color: Charcoal

Wainscot:

Front: Yes
 Right: Yes
 Back: Yes
 Left: Yes

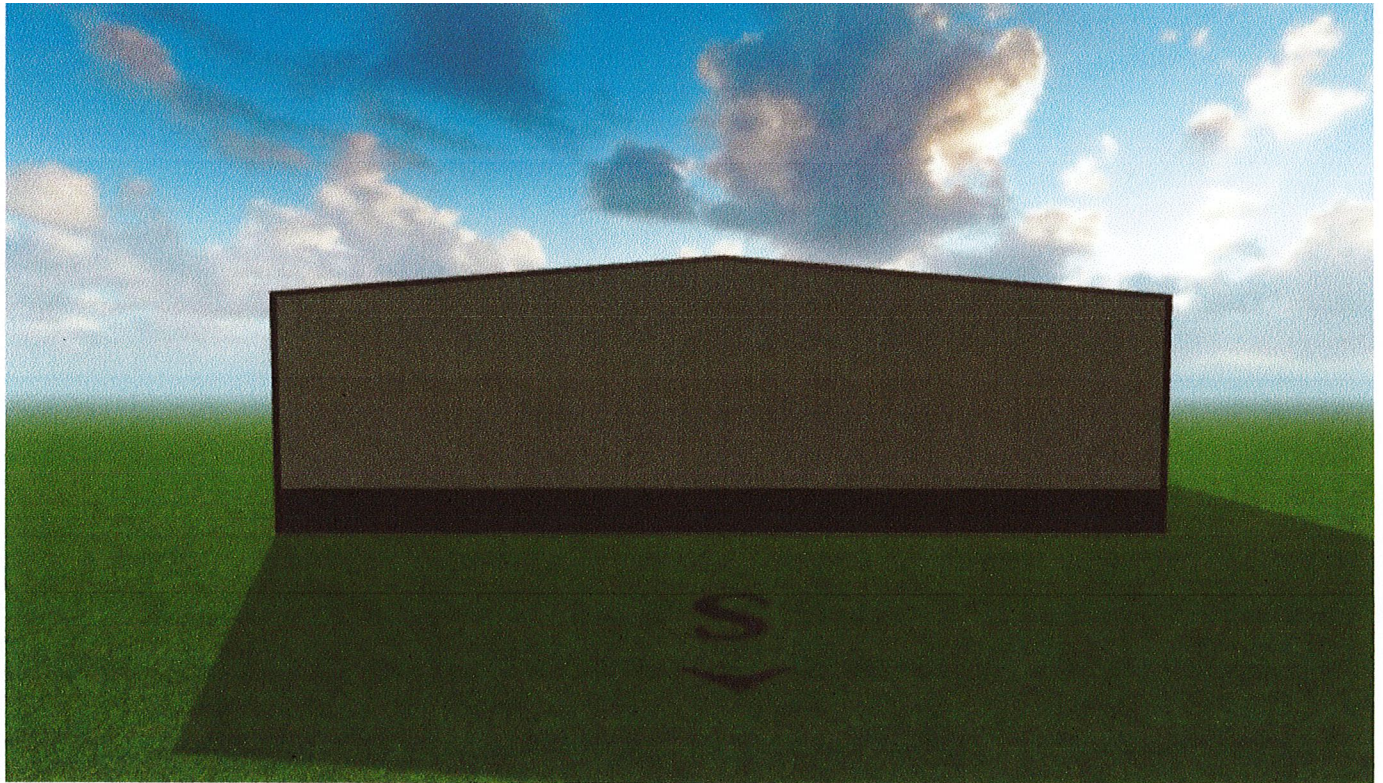
Mezzanine

Porches & Overhangs

East Porch
 Width: 24ft 0in
 Height: 15ft 0in
 From Center: 26ft 0in
 Porch Depth: 6ft 0in
 Roof Pitch: 4:12
 Northeast Wrap Porch
 Width: 10ft 0in
 Length: 10ft 0in
 Height: 11ft 0in
 Porch Depth: 6ft 0in
 Roof Pitch: ~~4:12~~ 2/12

Windows & Doors

Overhead Door: w10ft x h12ft
 Qty: 4
 Overhead Door: w12ft x h14ft
 Qty: 3
 Walk Door Solid: w3.5ft x h6ft
 Qty: 2
 Window: w4ft x h3ft Qty: 3
 Window: w3ft x h4ft Qty: 1



Building Specs

Width: 60'
 Length: 100'
 Height: 16'
 Roof Type: Gabled
 Roof Rise: 1":12"
 Secondary Members: Steel

Colors

Roof Color: Burnished Slate
 Wall Color: Light Stone
 Trim Color: Brown
 Soffit Color: Gray
 Wainscot Color: Charcoal

Wainscot:

Front: Yes
 Right: Yes
 Back: Yes
 Left: Yes

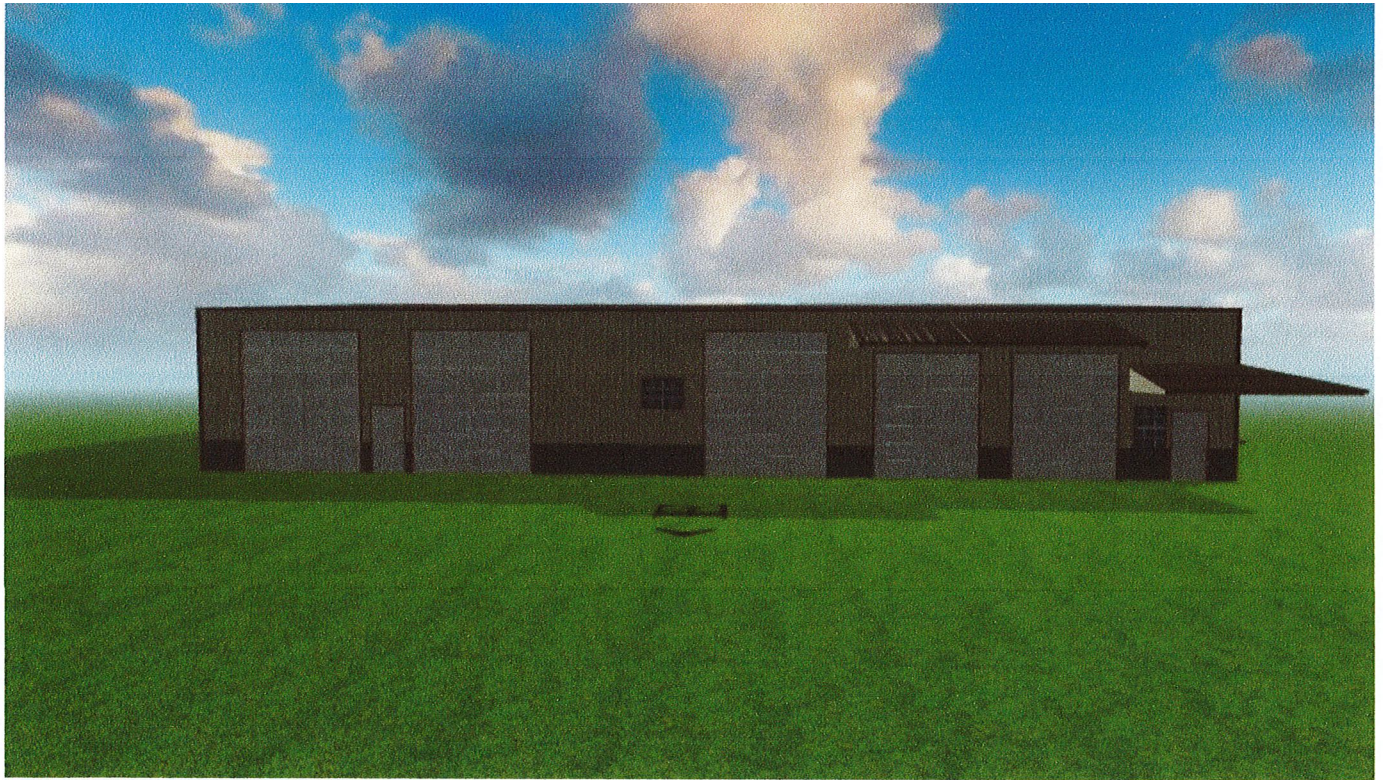
Mezzanine

Porches & Overhangs

East Porch
 Width: 24ft 0in
 Height: 15ft 0in
 From Center: 26ft 0in
 Porch Depth: 6ft 0in
 Roof Pitch: 4:12
 Northeast Wrap Porch
 Width: 10ft 0in
 Length: 10ft 0in
 Height: 11ft 0in
 Porch Depth: 6ft 0in
 Roof Pitch: ~~4:12~~ 2/12

Windows & Doors

Overhead Door: w10ft x h12ft
 Qty: 4
 Overhead Door: w12ft x h14ft
 Qty: 3
 Walk Door Solid: w3.5ft x h6ft
 Qty: 2
 Window: w4ft x h3ft Qty: 3
 Window: w3ft x h4ft Qty: 1



Building Specs

Width: 60'
 Length: 100'
 Height: 16'
 Roof Type: Gabled
 Roof Rise: 1":12"
 Secondary Members: Steel

Colors

Roof Color: Burnished Slate
 Wall Color: Light Stone
 Trim Color: Brown
 Soffit Color: Gray
 Wainscot Color: Charcoal

Wainscot:

Front: Yes
 Right: Yes
 Back: Yes
 Left: Yes

Mezzanine

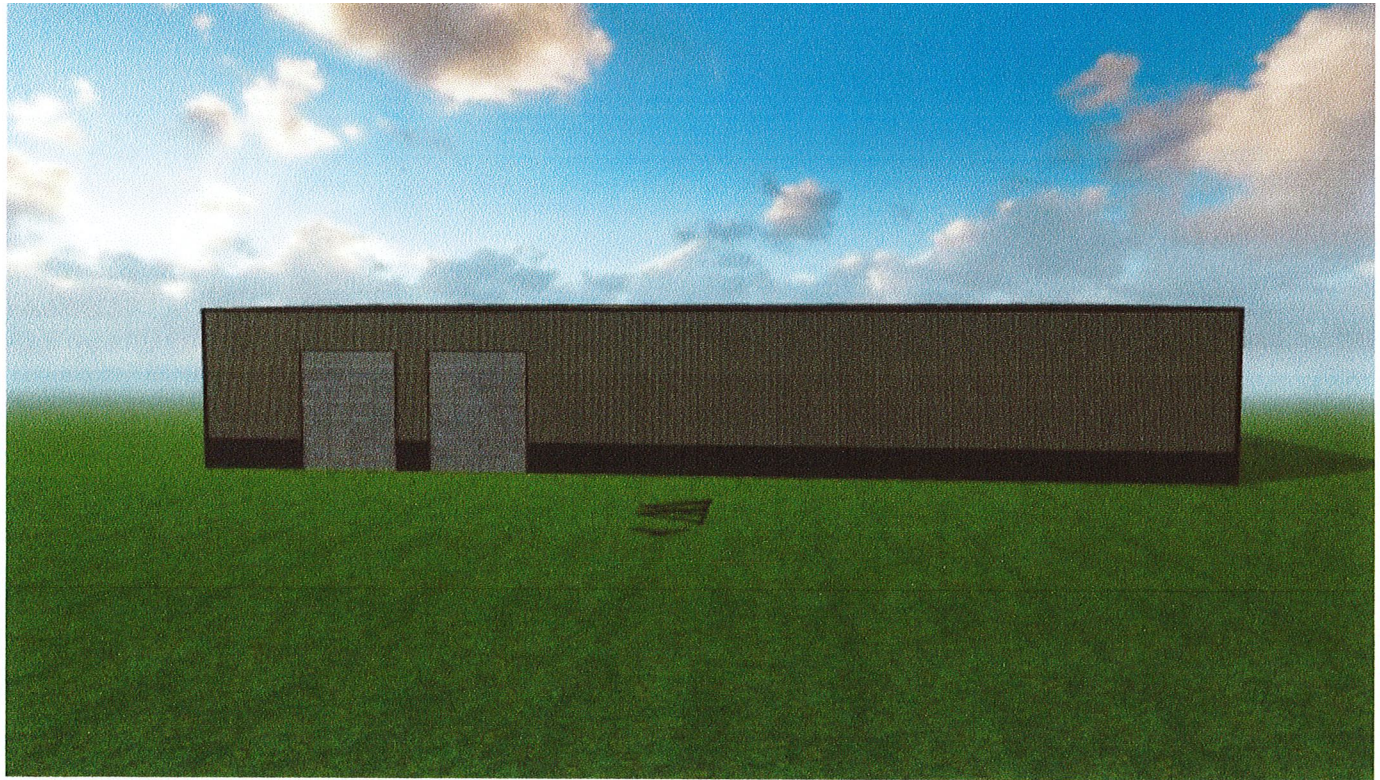
Porches & Overhangs

East Porch
 Width: 24ft 0in
 Height: 15ft 0in
 From Center: 26ft 0in
 Porch Depth: 6ft 0in
 Roof Pitch: 4:12
 Northeast Wrap Porch
 Width: 10ft 0in
 Length: 10ft 0in
 Height: 11ft 0in
 Porch Depth: 6ft 0in
 Roof Pitch: ~~12:12~~

2/12

Windows & Doors

Overhead Door: w10ft x h12ft
 Qty: 4
 Overhead Door: w12ft x h14ft
 Qty: 3
 Walk Door Solid: w3.5ft x h6ft
 Qty: 2
 Window: w4ft x h3ft Qty: 3
 Window: w3ft x h4ft Qty: 1



Building Specs

Width: 60'
 Length: 100'
 Height: 16'
 Roof Type: Gabled
 Roof Rise: 1":12"
 Secondary Members: Steel

Colors

Roof Color: Burnished Slate
 Wall Color: Light Stone
 Trim Color: Brown
 Soffit Color: Gray
 Wainscot Color: Charcoal

Wainscot:

Front: Yes
 Right: Yes
 Back: Yes
 Left: Yes

Mezzanine

Porches & Overhangs

East Porch

Width: 24ft 0in
 Height: 15ft 0in
 From Center: 26ft 0in
 Porch Depth: 6ft 0in
 Roof Pitch: 4:12

Northeast Wrap Porch

Width: 10ft 0in
 Length: 10ft 0in
 Height: 11ft 0in
 Porch Depth: 6ft 0in
 Roof Pitch: ~~4:12~~ 2/12

Windows & Doors

Overhead Door: w10ft x h12ft
 Qty: 4
 Overhead Door: w12ft x h14ft
 Qty: 3
 Walk Door Solid: w3.5ft x h6ft
 Qty: 2
 Window: w4ft x h3ft Qty: 3
 Window: w3ft x h4ft Qty: 1